



エビデンス情報レファレンスツール DynaMed[®]

— 最新かつ客観的な臨床医学情報を、素早く届ける —

- ✓ 著名な学術誌、国際的なガイドラインを多数モニター
→ **コクランのシステマティックレビュー文献もモニター**しています。
- ✓ 専任の編集チームが批判的吟味を加え、エビデンスを集約しリスト化
- ✓ 収録データは毎日更新。全診療科のトピック（記事）を収録
- ✓ 画像データ、根拠に基づいたRecommendationsを収録

2020_Mar

EBSCOHealth

トップ画面

DynaMed[®]

薬剤相互作用と薬剤のAtoZ一覧

 I HP
[SIGN IN](#)

[Learn more about CME](#)

[Specialties](#)

[Drug Interactions](#)

[Drugs A-Z](#)

[Calculators](#)


[About](#) ▾

[Mobile](#)

個人アカウントサインイン

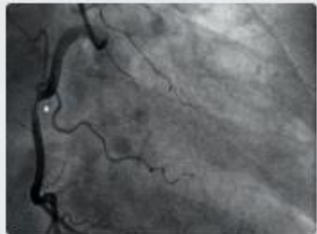
領域ごとにトピックを見る

CONFIDENCE IN PRACTICE

 English ▾

 Search DynaMed

キーワードを入力



Cardiology

Acute Coronary
Syndromes, Stable
Coronary Artery...

[View Specialty](#)



Oncology

Breast Cancers, Lung
Cancers,
Gastrointestinal...

[View Specialty](#)



Dermatology

Eczematous
Dermatoses, Malignant
and Pre-malignant...

[View Specialty](#)

編集チームへの
フィードバック送信

 [Feedback](#)

EBSCO Health

オートコンプリートでトピック候補と、検索用語候補を提示します

CONFIDENCE IN PRACTICE

English

upper

GO TO

Upper Extremity Amputation

Upper Extremity Deep Vein Thrombosis

Upper Respiratory Infection (URI) in Adults and Adolescents

Upper Respirator

Acute **Upper** Airw
to the Patient

SEARCH FOR

upper gi bleed

upper gastrointestinal bleeding

upper respiratory infection

Cardiology

Acute Coronary
Syndromes, Stable
Coronary Artery...

[View Specialty](#)

Recent Updates

16 Jan 2020

Go Toの下にあるトピックをクリックすると、ダイレクトにその項目に移動します。

Search Forの下にある用語をクリックすると、その用語でデータベースを検索します。

[Feedback](#)

- 日本語での検索について -

DynaMedは、Google 翻訳のAPIを用いた多言語検索に対応しています。

■ 日本語検索時の注意点 ■

- ・ 英単語が思い出せない場合、キーワードボックス左側の言語設定から「日本語」を選択し、日本語でキーワードを入力して検索ください。
- ・ **Google翻訳API**を用いた多言語検索です。
翻訳がうまくいかないこともありますので、その場合は「English」での検索を推奨します。
- ・ 「日本語」を選択した場合、オートコンプリートは作動しません。

検索ボックス左の言語ボタンで、検索したい言語を選択します

≡ DynaMed



SIGN IN

Learn more about CME

CONFIDENCE IN PRACTICE

English

Search DynaMed

中文

Čeština

Nederlands

English

Suomi

Français

Deutsch

Italiano

日本語

한국어

Norsk

Português

Cardio

Acute Co

Syndrom

Coronar

View Spe

Oncology

Breast Cancers, Lung

Cancers,

Gastrointestinal...

View Specialty

Dermatology

Eczematous

Dermatoses,

Malignant and Pre...

View Specialty

CONFIDENCE IN PRACTICE



日本語



麻疹



日本語を入力し、検索

DynaMed[®]



SIGN IN

Learn more about CME



麻疹



Specialties ▾

Drug Interactions

Drugs A-Z

Calculators

About ▾

Mobile

SEARCH RESULTS

麻疹 – measles

ALL (173)

IMAGES (21)

Google翻訳が検索語を英訳し、検索にヒットしたトピックが表示されます。

CONDITION

Measles

Measles is a highly contagious, vaccine-preventable viral illness causing fever and rash that is endemic throughout the world.

LAB MONOGRAPH

Measles antibody level



Measles

TOPIC [IMAGES \(5\)](#) [UPDATES](#)

閲覧情報の切り替え



▼ Overview and Recommendations

[Background](#)[Evaluation](#)[Management](#)[Prevention](#)[Related Summaries](#)▶ [General Information](#)▶ [Epidemiology](#)▶ [Etiology and Pathogenesis](#)▶ [History and Physical](#)▶ [Diagnosis](#)▶ [Management](#)▶ [Complications and Prognosis](#)▶ [Prevention and Screening](#)▶ [Guidelines and Resources](#)[Patient Information](#)▶ [ICD Codes](#)

Overview and Recommendations

Background

- Measles is a highly contagious, vaccine-preventable viral illness causing fever and rash.
- Measles is endemic throughout the world, particularly in Europe, Africa, and most of Asia, although it is largely eradicated from the Americas.
- Sporadic epidemics in the United States occur, typically due to importation from endemic countries and subsequent spread among unvaccinated persons.
- Spread occurs from person to person mainly via large respiratory droplets, with the virus able to survive for up to 2 hours on surfaces or in air spaces.
- The incubation period is about 10-12 days to onset of fever and 14 days to onset of rash.
- The infectious period lasts from about 4 days before to about 4 days after onset of the rash.

Evaluation

- Ask patients about a prodrome of fever, cough, coryza, and conjunctivitis lasting about 2-4 days.
 - Fever may be high (103-105 degrees F [39-41 degrees C]).
 - Koplik spots, small bluish-white lesions on the buccal mucosa, may arise during the prodrome and are pathognomonic for measles.

TOPIC EDITOR

Anne Neilan MD, MPH

RECOMMENDATIONS EDITOR

Amir Qaseem MD, PhD, MHA, FACP

DEPUTY EDITOR

Vito Iacoviello MD, FIDSA

Produced in collaboration with American College of Physicians



Images in topic (5)

[View all](#)

Koplik Spots

トピック本文、画像、更新履歴を
タブで切り替えて表示できます。

Measles

TOPIC **IMAGES (5)** UPDATES



Koplik Spots



Measles rash



Measles



Specialties ▾ Drug Interactions Drug

Measles

TOPIC  IMAGES (5) UPDATES

Overview and Recommendations

Background

- Measles is a highly contagious, vaccine-preventable viral illness causing fever and rash.

TOPIC EDITOR
Neilan MD, MPH

RECOMMENDATIONS EDITOR
Amir Oaseem MD, PhD



■ トピックのアラート設定 ■

トピックに新しい情報が追加された時のアラート設定が行えます。

※個人アカウントのサインインが必要です。




Follow

Updates to followed content are available on DynaMed and via email.

Email Options:

- ☐ Practice-Changing Updates Only
- ☐ All Updates
- ☒ No email, please. Just show my updates on DynaMed.



インパクトが高い更新や全ての更新等、配信レベルの設定ができます。

■ Find in Topic ■

トピック本文内から特定の用語を検索したい場合

The screenshot shows the DynaMed website interface. At the top, there's a navigation bar with the DynaMed logo, a user profile icon, a CME 46.0 badge, and a search bar containing 'copd'. Below the navigation bar, there's a secondary bar with links for Specialties, Drug Interactions, Drugs A-Z, Calculators, About, and Mobile. The main content area is titled 'COPD' and has tabs for TOPIC, IMAGES (2), and UPDATES. The TOPIC tab is active. On the left, there's a sidebar with a list of topics: Overview and Recommendations (expanded), Background, Evaluation, Management, Related Summaries, and General Information. The main content area displays the 'Overview and Recommendations' section, which includes a 'Background' subsection. This subsection contains a bulleted list: 'Chronic obstructive pulmonary disease (COPD) is characterized by significant airflow limitation associated with a chronic inflammatory response in the airways and lungs resulting in the destruction of lung tissue.' and 'It commonly affects adults > 40 years old who smoke, with an estimated worldwide prevalence of 4%-10%.' On the right side of the main content area, there's a sidebar with editor information: TOPIC EDITOR (Linda Nici MD), RECOMMENDATIONS EDITOR (Allen Shaughnessy PharmD, M Med Ed, FCCP), and DEPUTY EDITOR (Terence K. Trow MD, FACP, FCCP). At the bottom of the page, there's a footer with two buttons: 'Find in Topic' and 'Feedback'. The 'Find in Topic' button is highlighted with a yellow box.

DynaMed

CME 46.0

copd

Specialties ▾ Drug Interactions Drugs A-Z Calculators About ▾ Mobile

COPD

TOPIC IMAGES (2) UPDATES

Overview and Recommendations

Background

- Chronic obstructive pulmonary disease (COPD) is characterized by significant airflow limitation associated with a chronic inflammatory response in the airways and lungs resulting in the destruction of lung tissue.
 - It commonly affects adults > 40 years old who smoke, with an estimated worldwide prevalence of 4%-10%.

TOPIC EDITOR
Linda Nici MD

RECOMMENDATIONS EDITOR
Allen Shaughnessy PharmD, M Med Ed, FCCP

DEPUTY EDITOR
Terence K. Trow MD, FACP, FCCP

Find in Topic Feedback

最下段に表示されたFind in Topicをクリック

表示されたボックスに探したい用語を入力して検索します

COPD

Management › Smoking cessation › Overview of smoking cessation

Effects of smoking cessation in COPD

Achieving smoking cessation (COPD-specific evidence)

Smoking cessation topics

Diet

› Activity

Counseling

› Medications

› Surgery and procedures





encouraged (PHS Strength of Evidence A)

- more intensive interventions (that is, more sessions, longer sessions) are more effective than less intensive interventions and should be used whenever possible (PHS Strength of Evidence A)
- consider self-help materials specific to patient's needs (both print and web-based) to help people quit (PHS Strength of Evidence B)

– smoking cessation interventions should provide both (PHS Strength of Evidence B)

- practical counseling (such as recognizing situations that increase relapse risk and developing coping skills)
- support and encouragement

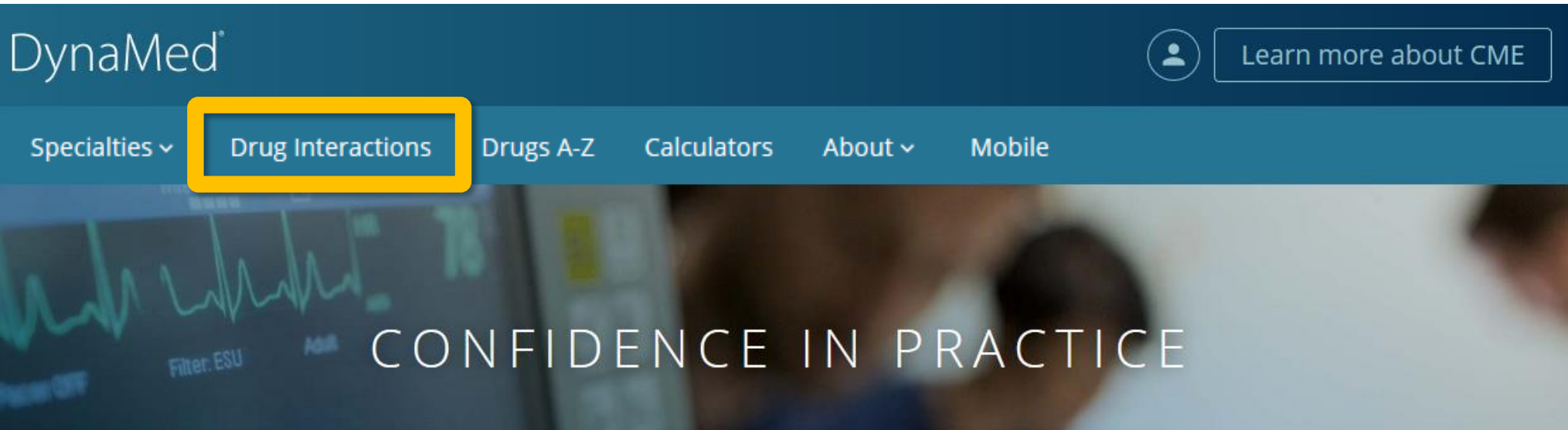
- first-line **medication** options
- effective **medication** should be offered to all smokers who do not have contraindications, but caution needed in pregnant women, smokeless tobacco users, adolescents, or light smokers as there is

9 / 46    

ヒットした箇所がハイライトで表示され、  で前後に移動することができます。

■ Drug Interactions 薬剤相互作用 ■



DynaMedで薬剤相互作用を確認することができます。



次に表示されるページで**Terms & Conditions**に同意し、
利用画面に進んでください。


※DynaMedでは、IBM Watson Health社提供の
IBM Micromedex® Drug Interaction Checkingを
採用しています。

Drug Interactions 利用画面

≡ DynaMed[®]  [Learn more about CME](#) 

Drug 1

Drug 2

 Add Drug

Check for Interactions

3つ以上Drugを追加
することもできます

薬剤名を入力し、**Check for Interactions**をクリック

ASPIRIN

warfa|

WARFARIN

WARFARIN SOD

WARFARIN SODIUM

Warfarin Sodium (COUMADIN)

Warfarin Sodium (JANTOVEN)

Warfarin Sodium (PANWARFIN)

Warfarin Sodium (WARFARIN SOD)

Warfarin Sodium (WARFARIN SODIUM)

Warfarin Sodium (WARFARIN)

オートコンプリートにも
対応しています。

Start Over

[About DynaMed](#) | [Help](#) | [Privacy Policy](#) | [Terms of Use](#) | [Copyright](#)



例) AspirinとWarfarin

Mobile

Drug Interactions

Use the search fields to look up two or more drugs for potential interactions.

ASPIRIN

WARFARIN

⊕ Add Drug

Check for Interactions

食物やタバコ等、他の物質
との相互作用も確認できます

相互作用の内容

Interactions for ASPIRIN, WARFARIN

Display Drug/Drug interactions

Drug/drug Interactions (1):

ASPIRIN

Documentation: Fair

Concurrent use of **WARFARIN** and **ANTIPLATELET AGENTS** may result in increased risk of bleeding. [See details >](#)

Interactions for ASPIRIN, WARFARIN

Display Drug/Drug interactions

- Drug/Drug interactions
- Drug/Food interactions
- Drug/Ethanol interactions
- Drug/Lab interactions
- Drug/Tobacco interactions

See details 詳細情報を確認する

[◀ Back To Checker](#)

ASPIRIN



Warning:

Concurrent use of WARFARIN and ANTIPLATELET AGENTS may result in increased risk of bleeding.

Clinical Management:

Coadministration of warfarin and antiplatelet agents may increase the risk of bleeding. Monitor patients closely for signs or symptoms of bleeding (Prod Info Jantoven® oral tablets, 2014) and evaluate promptly. Lab monitoring may be appropriate.

Onset:

Not Specified

Severity:

Major

Documentation:

Fair

Probable Mechanism:

additive effects

Summary:

Coadministration of warfarin and antiplatelet agents may increase the risk of bleeding. Monitor patients closely for signs or symptoms of bleeding (Prod Info Jantoven® oral tablets, 2014) and evaluate promptly. Lab monitoring may be appropriate.

Literature:

Data were retrospectively analyzed on 109 patients who underwent coronary angioplasty alone (group II) and on 138 patients who underwent coronary angioplasty plus coronary stent placement (group I) over a four-year period. Group II received aspirin 325 mg daily beginning immediately after angioplasty but no anticoagulation. Group I was given heparin and warfarin until INR reached 2.5. Heparin was then discontinued, and warfarin and aspirin 325 mg daily were continued for three months. An upper gastrointestinal bleed (UGIB) occurred in 28 of the 138 patients (20.3%) in group I, while no patients in group II developed an UGIB. An average of 2.5 days of combination therapy with aspirin and warfarin elapsed before the onset of the UGIB. It is postulated that aspirin causes local injury to the gastrointestinal mucosa which is normally not clinically significant. However, in patients also receiving anticoagulants, this injury becomes magnified and results in a gastrointestinal bleeding episode (Younossi et al, 1997).

In a meta-analysis of six randomized clinical trials, the use of aspirin was associated with more than double the frequency of intracranial hemorrhage. The trials included 3874 patients with 31 diagnosed intracranial hemorrhages. The frequency of intracranial hemorrhage was not dependent on the

詳細情報画面では、根拠となる文献等の情報も確認することが可能です。

■ Drugs A-Z ■ 薬剤名のアルファベットリスト

Specialties ▾ Drug Interaction **Drugs A-Z** Calculators About ▾ Mobile

Drugs A-Z

Powered by IBM Micromedex

A B C D E F G H I J K L M N O P Q R S T U V

Find in list

A

Abacavir

Abacavir/Dolutegravir/Lamivudine

Abacavir/Lamivudine

Find in list 選択しているリスト内で特定の文字列を検索できます。

Drugs A-Z

Powered by IBM Micromedex

A B C D E F G H I J K L M

carb

C

Calcium**Car**bonate

Calcium Poly**carb**ophil

Carbachol

Carbamazepine

文字列を含む薬剤名を表示

[Specialties ▾](#)

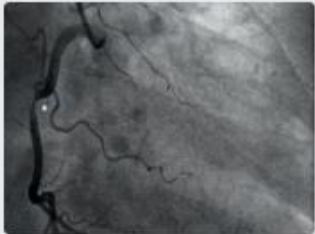
Specialtiesから領域ごとに
トピックを見る場合

CONFIDENCE IN PRACTICE

English ▾



Search DynaMed



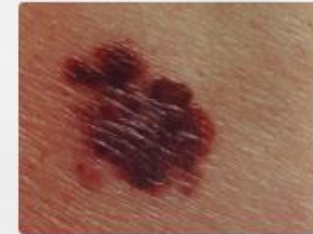
Cardiology

Acute Coronary
Syndromes, Stable
Coronary Artery...

[View Specialty](#)

Oncology

Breast Cancers, Lung
Cancers,
Gastrointestinal...

[View Specialty](#)

Dermatology

Eczematous
Dermatoses, Malignant
and Pre-malignant...

[View Specialty](#)[Feedback](#)

各領域から、ツリー構造を辿りながら
トピックを確認できます。

DynaMed®



SIGN IN

Learn more about C

Specialties ^

Drug Interactions

Drugs A-Z

Calculators

About v

Mobile

Allergy

Anesthesiology and Pain Management

Cardiology

Critical Care

Dermatology

Emergency Medicine

Endocrinology

Family Medicine

Gastroenterology

Geriatrics

Gynecology

Hematology

Hospital Medicine

Immunology

Infectious Diseases

Internal Medicine

Nephrology

Neurology

Neurosurgery

Obstetric Medicine

Oncology

Ophthalmology

Oral Health

Orthopedics and Sports Medicine

Otolaryngology

Palliative Care

Pathology and Laboratory Medicine

Pediatrics

Physical Medicine and Rehabilitation

Psychiatry

Pulmonary Medicine

Rheumatology

Sleep Medicine

Surgery

Urology

例) Cardiology

ツリーが展開し、表示されたトピックから閲覧ができます。

Specialty

Cardiology

- › Cerebrovascular disease
- › Congenital heart disease
- › Acute coronary syndromes
- › Stable coronary artery disease (cad)
- › Electrophysiology
- ▼ Heart failure
 - › Cardiomyopathies
 - › Cardiac conditions associated with heart failure
 - › Heart failure with preserved ejection fraction
 - › Heart failure with reduced ejection fraction
 - › Right heart failure
 - › Quality measures
 - › Hypertension

Cardiology

- › Cerebrovascular disease
- › Congenital heart disease
- › Acute coronary syndromes
- › Stable coronary artery disease (cad)
- › Electrophysiology
- ▼ Heart failure
 - ▼ Cardiomyopathies
 - Arrhythmogenic right ventricular dysplasia
 - Cardiac amyloidosis
 - Cardiac sarcoidosis
 - Cardiomyopathy (list of topics)
 - Chagas-associated heart disease
 - Dilated cardiomyopathy
 - Hypertrophic cardiomyopathy



- 個人アカウント機能の強化について -

■ 個人アカウントのメリット ■

- 1) 院外、学外からのリモートアクセスが可能になります。
- 2) フォローするトピックや閲覧履歴の表示など、個人の嗜好に基づいた情報を表示できます。
- 3) 別のDynaMed契約施設へ転職・異動した場合も、元の個人アカウントを引継いで使うことができます。

個人アカウントの新規登録について

SIGN IN → 遷移した画面で**Register Now**をクリック→
Email、パスワード、専門領域等を登録します。

この**Email**と**パスワード**を、個人アカウントのサインインと
リモートアクセスのログインで使します。



The screenshot shows the DynaMed website interface. The top navigation bar is dark blue with the DynaMed logo on the left. On the right, there is a yellow-bordered box containing a user icon and the text "SIGN IN". To the right of this box is a link that says "Learn more about CME". Below the navigation bar, there is a horizontal menu with links for "Specialties", "Drug Interactions", "Drugs A-Z", "Calculators", and "About". The main content area has a background image of a medical monitor displaying a waveform. Overlaid on this is a large yellow box with the text "個人アカウントのサインインもここから行います。". At the bottom, there is a search bar with a magnifying glass icon and the text "Search DynaMed", and a language selector set to "English".

DynaMed

SIGN IN Learn more about CME

Specialties Drug Interactions Drugs A-Z Calculators About

個人アカウントのサインインもここから行います。

CONFIDENCE IN PRACTICE

English Search DynaMed

Emailアドレスでのリモートアクセスについて

DynaMed® | DynamicHealth™

Login

Email Address / User ID

Password

Login

☐ Keep Me Signed In

[Forgot your Password?](#)

The Next-Generation Clinical Informa

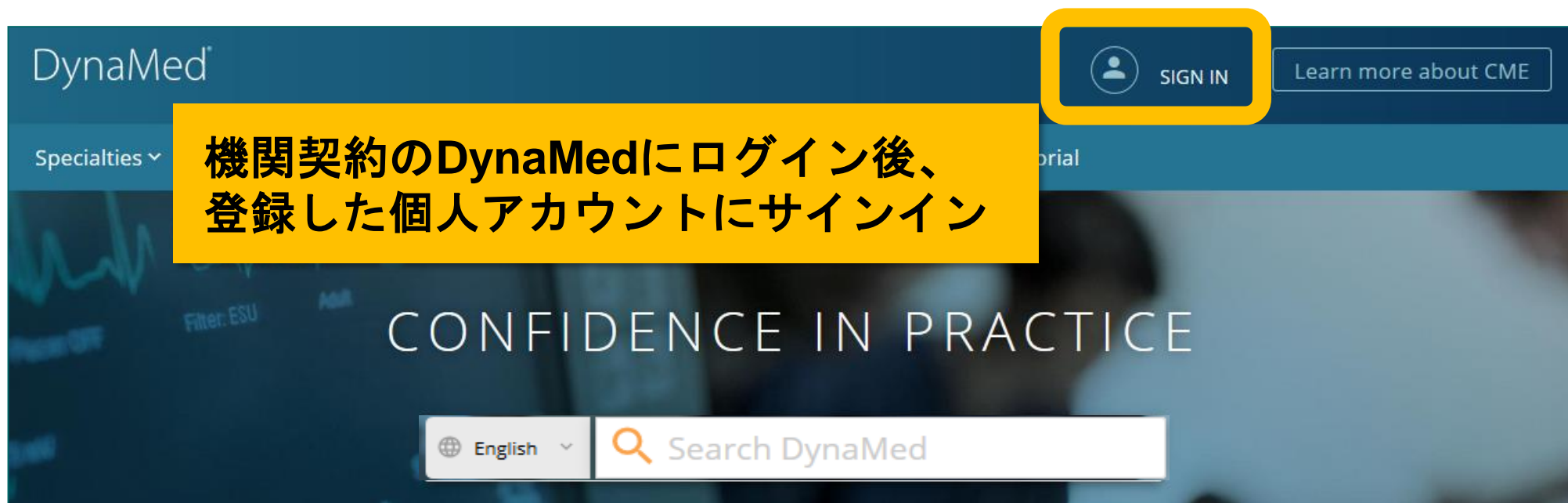
Experience why *DynaMed Plus* is the go-to re the world.

- New and improved user interface makes it easy
- Updated multiple times every day to ensure cor evidence.
- Unbiased content means users can always trust
- Bulleted format makes it easy to scan content an

<https://auth.dynamed.com/> にアクセスし、
登録したEmailとパスワードでログインします
(QRコードからもアクセスできます)



閲覧履歴の表示等について



Updates

FOLLOWED

ALL

13 Jun 2019

1,022 cases of measles reported in 28 states in the United States between January 1 and June 6, 2019 (CDC Measles Cases and Outbreaks 2019 June 10)

View in [Measles](#)

11 Jun 2019

addition of case-manager-led multicomponent intervention to usual care may not reduce

個人アカウントにサインインすることで、
閲覧履歴やフォローするトピックなど、
ユーザーの好みに紐づいた情報を確認
できるようになります。

COPD (Eur Respir J 2018 Jan 11)

View in [COPD](#)

11 Jun 2019

motivational interviewing-based health coaching may not improve COPD-related quality of life or dyspnea in adults with moderate-to-severe COPD with limited resources (Ann Am Thorac Soc 2018)

Recently Viewed

[Abdominal aortic aneurysm \(AAA\)](#)

[Decision rules for computed tomography in children with head injury](#)

[Measles](#)

[Acute rhinosinusitis in adults](#)

[Gastrointestinal angiodysplasia](#)

[COPD](#)

[Cough - approach to the patient](#)

[Chronic asthma in children](#)

[Fever of unknown origin \(FUO\) in children - approach to the patient](#)

[Peanut allergy](#)

Followed

+ COPD

+ Abdominal aortic aneurysm (AAA)

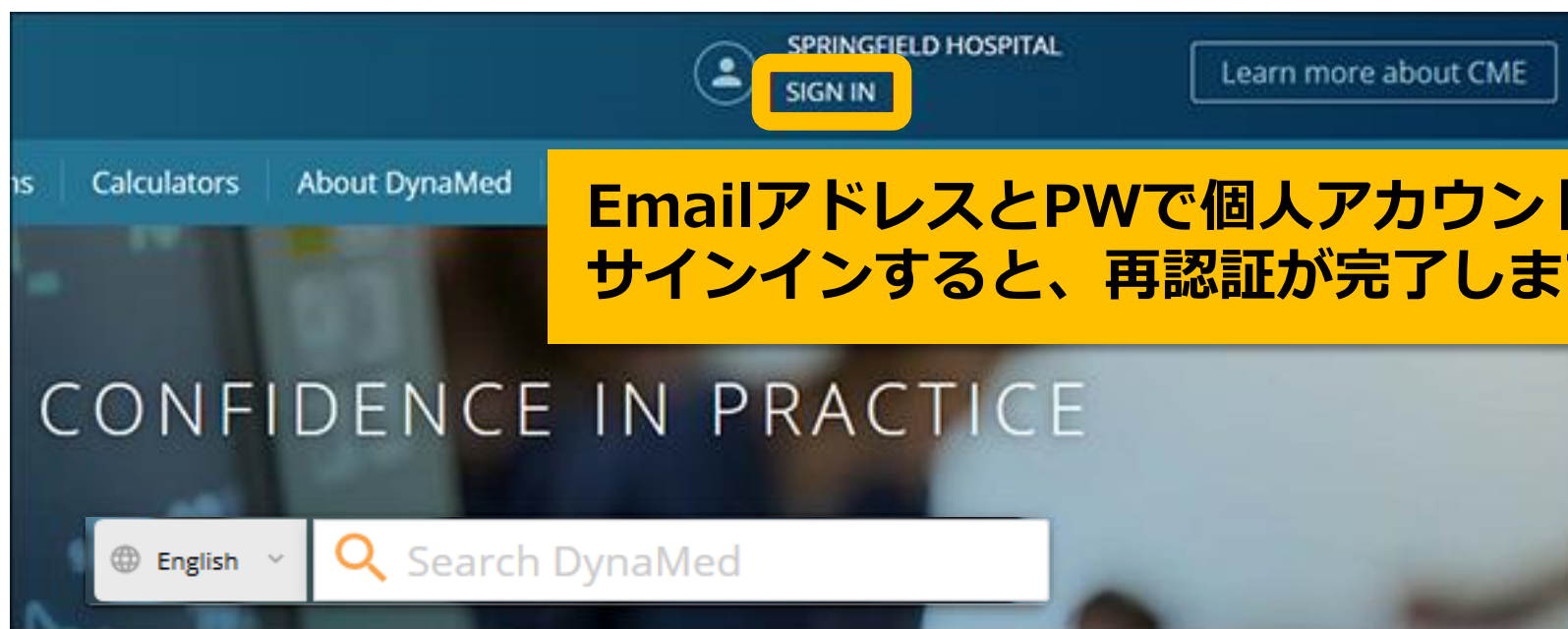
+ Peanut allergy

+ Measles

- 個人アカウントの再認証について -

**個人アカウントには、有効期限があります。
有効期限が切れた場合の再認証方法は以下の通りです。**

所属機関、契約中のDynaMedアカウントにログインし、
続いて個人アカウントにサインインします。



- モバイルアプリでの利用について -

モバイルアプリ（無料）をお使いになりたい場合は、以下QRコードの「アプリインストールガイド」の8ページ以降をご覧ください。

※アプリの利用には、**個人アカウントの登録**が必要です。



URL : http://www.ebsco.co.jp/medical/dynamed/supports/how-to-signup-personal-account_mobile-app.pdf

利用に関するお問い合わせは、下記まで

EBSCO Information Services Japan株式会社

@ jp-medical@ebSCO.com

☎ 03-5342-0701